

FITTING FOR YOUR TORSO LENGTH

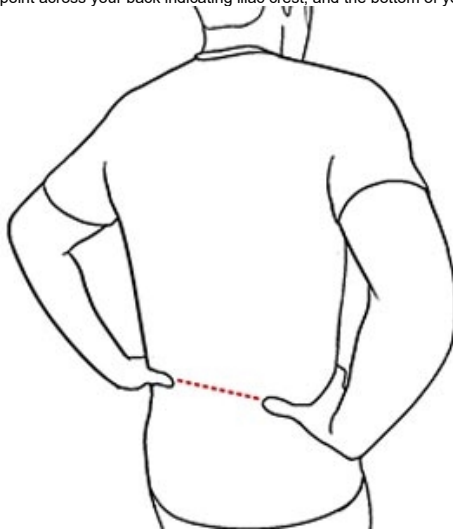
1. LOCATE THE TOP OF THE TORSO

Find where the shoulders meet the neck. Trace your hand towards the center of the neck, until you feel a bony bump at the base of the neck. That bump is the C7 Vertebrae, and the top of your torso.



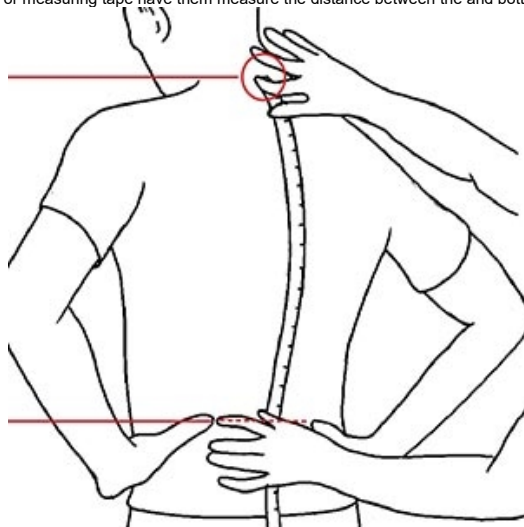
2. LOCATE THE BOTTOM OF THE TORSO

Place your hands comfortably on your hips, your thumbs point across your back indicating iliac crest, and the bottom of your torso.



3. MEASURE THE TORSO

Ask a friend or sales associate for help. Using a string or measuring tape have them measure the distance between the top and bottom of your torso.



FITTING FOR YOUR HIP BELT

Using the correct belt size is critical for a comfortable carry. A properly sized hip belt will wrap over your hipbones and still leave a gap in the padding at the front. We offer belts in a variety of sizes for men and women. Women's belts fit those with a higher degree of angle in their hips, while men's belts fit people with very little angle in their hips. There are times when belts fit some women better, and women's belts fit some men better. It all depends on the degree of angle in the hips!

HOW TO MEASURE:

- We made it easy. Go by your pant size measurement. Technically speaking, it's the measure of the circumference at hip crest.
- If you don't know your pant size, take a measurement with a flexible tape measure with the tape next to your skin, around your waist. Measure the circumference at your hip points.
- Next find your belt size match on the chart that corresponds with your pack below.

VAPOR CURRENT, AIR CURRENT, NIMBUS EXO, AND PORTAGE BELTS

These belts are found on the Crown V.C. 60, Leopard VC 46, Leopard AC 58, Blaze AC 60, Nimbus Trace Access series, and Expedition and Traditional series Portage Packs.

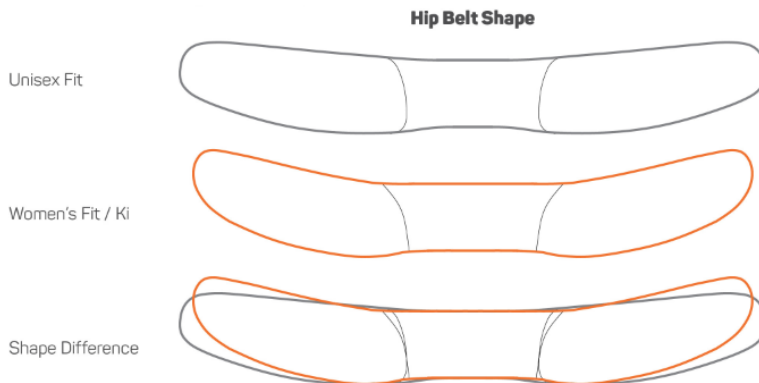
Men's and Women's belt size are same measured in inches.

1. Size small belt fit's waist sizes 26 to 30 inches
2. Size medium belt fit's waist sizes 30 to 34 inches
3. Size large belt fit's waist sizes 34 to 38 inches
4. Size extra large belt fit's waist sizes 38 to 42 inches

Re-Fit Belts as on the Crown 2 38, Crown2 60, Blaze 60 and all the Lutsen series packs. The Re-fit belts come in a Men's and Women's version. They are both adjustable from 28 inches to 40 inches.

Men's belt fit's waist sizes 28 to 40 inches
Women's belt fit's waist sizes 28 to 40 inches

HIP BELT SHAPE



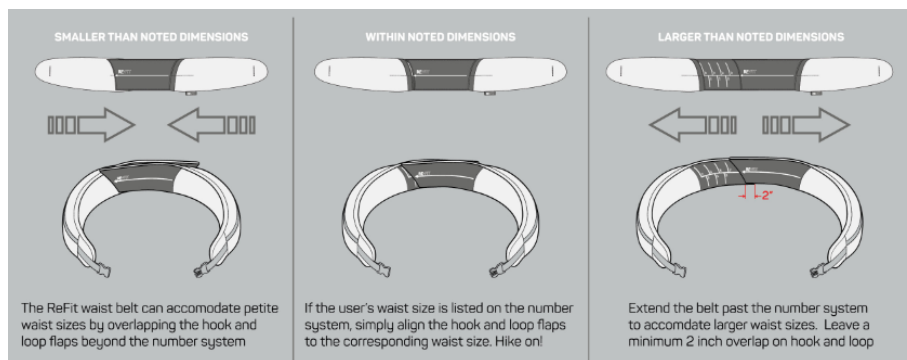
ADJUSTING THE RE-FIT HIP BELT

It is important to dial in the fit of the waist belt to insure proper weight transfer and pack comfort. A perfect fit can be achieved by simply breaking the hook and loop closure of any Re-Fit belt and adjusting to fit your waist size.

The Re-Fit waist belt can accommodate petite waist sizes by overlapping the hook and loop flaps beyond the number system.

If the user's waist is listed on the number system, simply align the hook and loop flaps to the corresponding waist size. Hike on!

Extend the belt past the number system to accommodate waist sizes. Leave a minimum 2 inch overlap on hook and loop.



SHOULDER STRAPS

To find the ideal shoulder strap size, measure your chest. Shoulder straps come in two widths also. The trim shoulder strap is standard on almost all packs except the Expedition packs, which sport a wide shoulder strap that can comfortably carry loads over 60 lbs. Our shoulder straps fit both men and women equally well.

Men's and Women's belt size are same measured in inches.

1. Size small fit's chest sizes 26 to 34 inches
2. Size medium fit's chest sizes fits 34 to 40 inches
3. Size large belt fit's chest sizes 40 to 46 inches
4. Size extra large belt fit's chest sizes 46 to 52 inches

Shoulder Strap Shape

